

TWIN REVERSING 24" CROSS CONVEYORS

- 5 Hp reversing conveyors
- Adjustable skirting through accessible guarded locations
- Rubber belt scrapers located at head sections

24" RETURN CONVEYOR

- 10 Hp 240 FPM conveyor
- Angle of incline held to under 21 degrees to allow proper return of material
- Chevron belting to aide with return material transfer
- 35° idlers to eliminate the need for skirting maintenance along the length of the conveyor while retaining material on conveyor
- Return conveyor lowers to transport position hydraulically
- Return chute folds hydraulically for transport and locks in position for operation or transport
- Return chute has replaceable wear liners

48"X 35' SCREEN FEED CONVEYOR

- 20 Hp rear discharge conveyor
- Stainless steel plating and discharge chute in magnet area

48"X 13' UNDER SCREEN CONVEYOR

- 10 Hp 300 FPM conveyor
- Primary belt scraper
- Cema C idlers
- 3 ply 330 PIW 3/16" x 1/6"
- Full adjustable skirting along conveyor length

ON BOARD FUEL CAPACITY FOR 14 HRS OF FULL OPERATION ALL BUILT ON A WIDE FLANGE BEAM QUAD AXLE CHASSIS

- Six hydraulic run-on jack legs
- 8 Hp gas powered hydraulic unit
- Quad axle suspension c/w air brakes mud flaps and running lights as required
- Material bypass chute under the feeders to contain material flow from grizzly scalper
- Feeder hopper module can be removed if needed for transport in weight sensitive areas

450HP TIER 4 FINAL DIESEL DRIVE PACKAGE

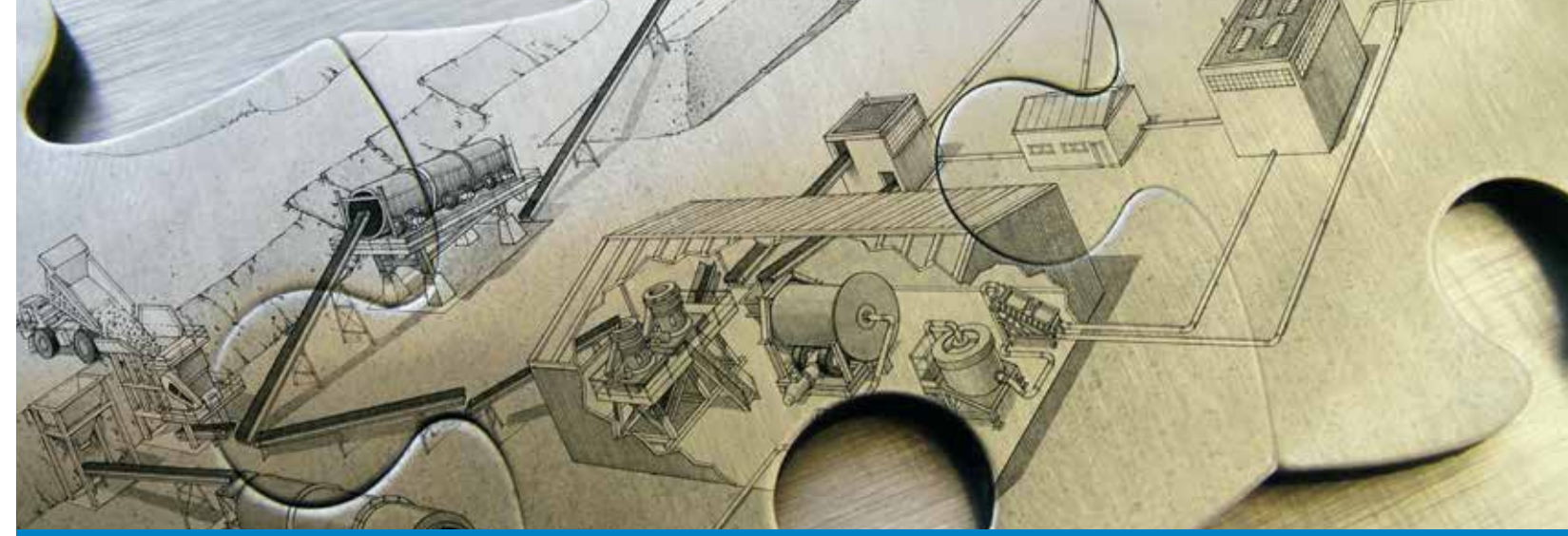
- Delivering 250 Hp to the HSI rotor for maximum crushing capability

170/180 KW GENERATOR

- Supplying power for all on board equipment functions as well as auxiliary equipment if required

FULL ELECTRICAL CONTROL FROM A REMOVABLE PANEL

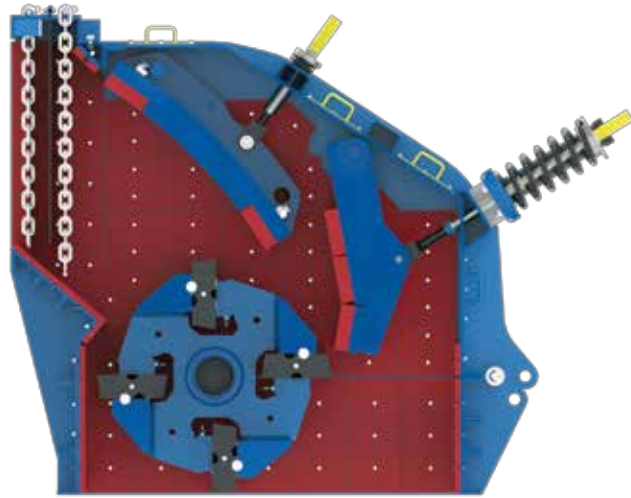
- Main disconnect protected panel cULus and CSA aproved
- VFD remote control for 30 Hp feeder speed control
- Twin 2.5 Hp pan feeder drives
- 20 Hp rear discharge conveyor
- 3 Hp Magnet Conveyor drive
- 15 Hp Screen Drive Motor
- (Two) 5 Hp reversing cross conveyor drives
- 10 Hp Return conveyor drive
- (Two) breaker protected 25 Hp P&R's for off plant equipment
- E stops Located on plant and panel
- Operation voltage, amperage and frequency readings readily available through a touch screen
- Remote start stop for feeder



SEPRO PRIMARY IMPACTOR 5000

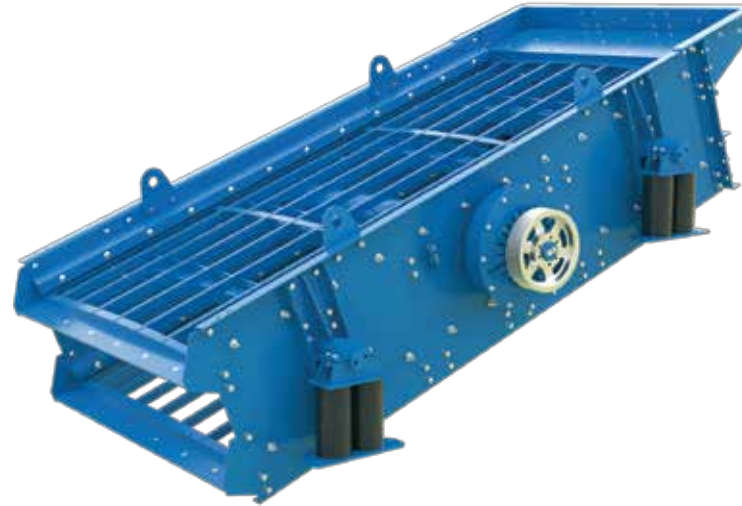


SEPRO PRIMARY IMPACTOR 5000



SEPRO 42" X 50" HSI CRUSHER

- 50 ¾" wide x 37" high feed opening
- 42" diameter x 49 ¼" wide four bar rotor
- Impact bars have four crushing positions
- The hammer retention system utilizes reusable hardware
- Mono block primary apron with replaceable leading-edge liners
- The primary apron is flipable to give extended wear life
- The primary apron is adjusted manually
- The secondary apron is adjusted hydraulically with a heavy-duty spring retention system
- 1" Thick replaceable wear liners
- Both the upper hood and the rotor have maintenance locking pins for safety during service



SEPRO 6' X 12' DD INCLINE SCREEN

- 10 Hp TEFC drive motor
- Reactionary coil spring isolation
- M9 vibrating unit with 90 mm bearings
- Variable flywheel counterweights offer a wide range of stroke
- Side tension system utilizing carriage bolts and clamp bars
- Full drive belt guarding for safety
- Rubber bushing tension take-up
- Walkway on both sides and across the back to ease maintenance
- Retractable ladder and safety gate
- Screen raises and lowers hydraulically to operation or travel positions
- In each position the screen support uses pin locks for safety



SEPRO 4816 VGF FEEDER

- 30 Hp TEFC electric drive
- Heavy duty integrated drive support base
- Reactionary coil spring isolation
- Pan has ½" Replaceable wear liners
- 3/8" replaceable side liners
- 30" finger grid cartridge improves material scalping before crusher
- Finger cartridges come in a variety of opening settings
- LPE 9 vibrating unit



SEPRO 4873 VIBRATING PAN FEEDER

- Twin 3.2 Hp counter rotating eccentric vibrator drives
- Reactionary coil spring isolation
- ½" replaceable wear liners
- Rubber replaceable dust seal



SELF CLEANING CROSS BELT PERMANENT MAGNET

- 3 Hp TEFC Electric right-angle drive
- 34" wide x 55" long cross belt magnet
- Vulcanized paddles to help move steel along the direction of travel
- Suspended with adjustment for different set up requirements